

The background is a vibrant blue-toned digital landscape. It features a globe in the upper left, with binary code (0s and 1s) scattered across the scene. A bright light source on the right creates a lens flare and illuminates the scene. The overall aesthetic is futuristic and technological.

Supporting Global Research at NU: Debunking the Myths

Nicole Magni

Jacque Avery

Jamie Tessler

Rae Mwangi

Amanda Humphrey

Session description

- *The NU-RES Hub will lead a discussion on how supporting global research needs can differ from various campus expectations in practice. What does the unit think that we do vs. how we can we actually support those research needs? This session will bring together members of the Hub, Global ERS, HRPP and Research Compliance to provide an overview of the global network, its growth and some lessons we are learning as research grows throughout the network.*



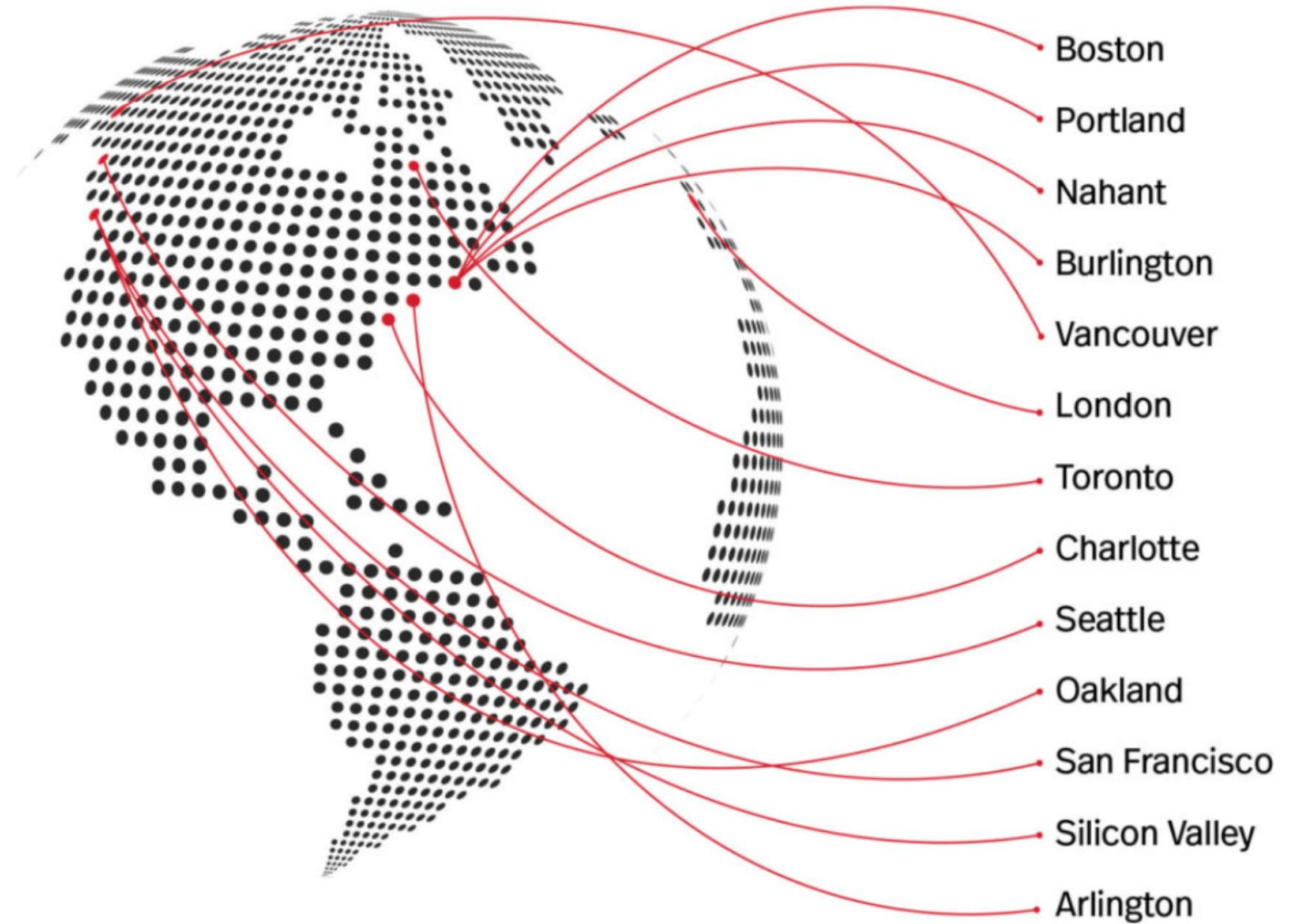
Agenda

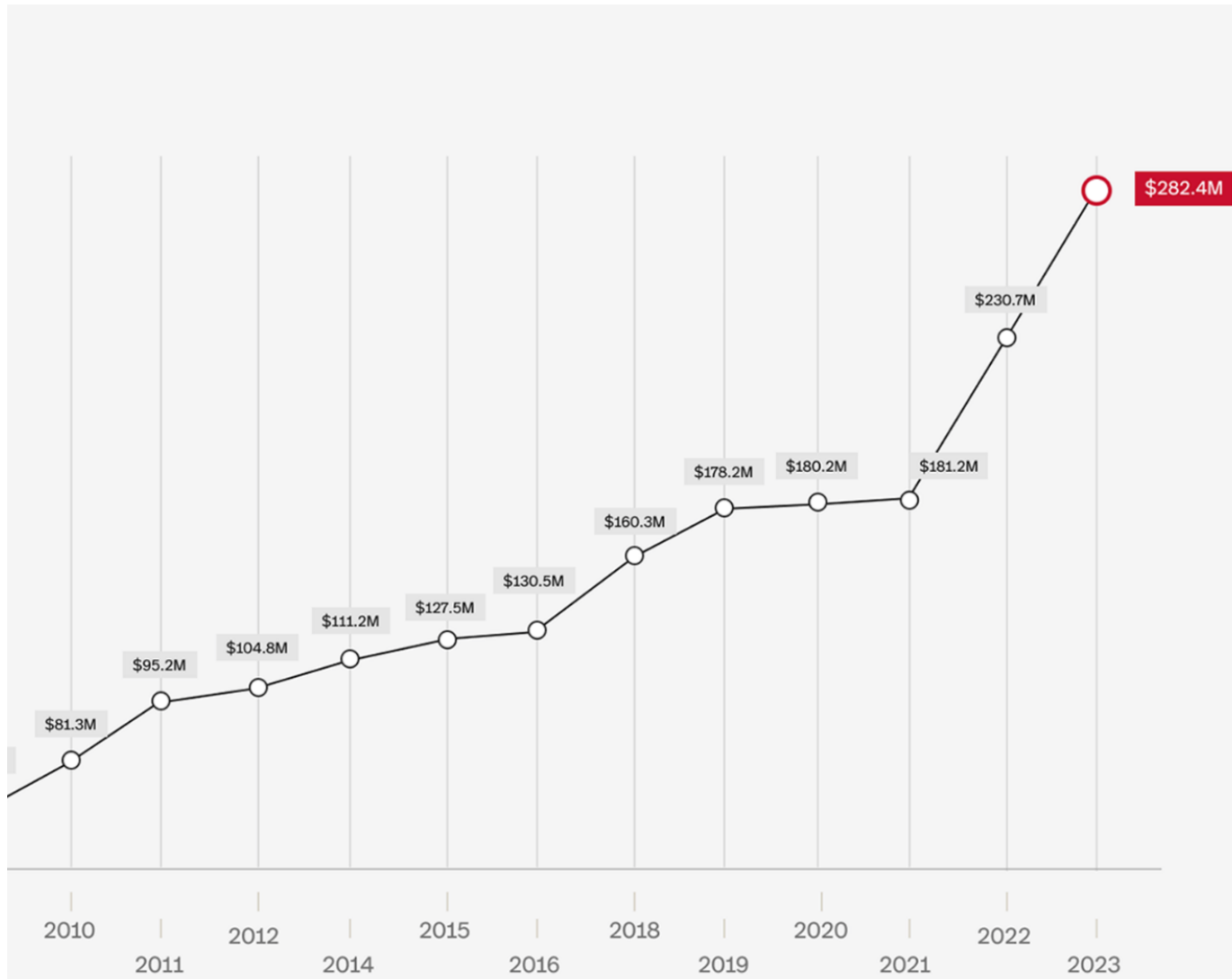
- Overview
 - The Hub
 - HRPP
 - Global ERS
 - Research Compliance
-



The Global Campus Network...

- Plus Dublin
- Coming Soon...New York City!
- 11 Domestic locations
- 4 International locations
- Not all are research-oriented





\$281.9M

in external research awards in 2022-2023

479%

increase since 2006

Myth One: The Campuses Are the Same

Interest in Research

Physical Capabilities of Campus (space or ability to expand/develop)

Experienced Staff to Support Research

Maturity of the Campus

Type of Research

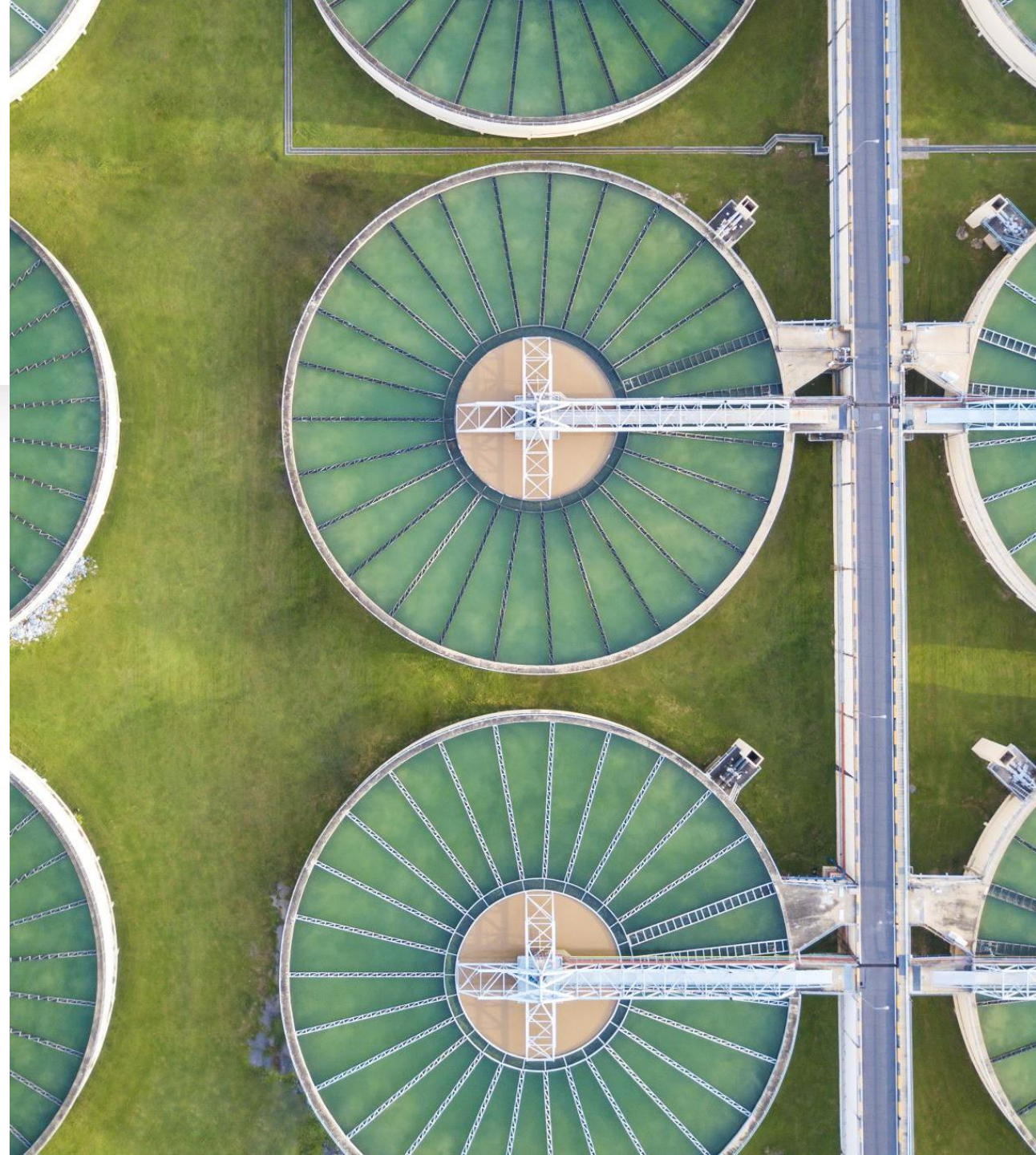
Local & Country Specific Regulations

Relationship with Local Community

Legal Relationship with Northeastern

Myth Two: Central Resources can Equally & Quickly Support All

- Whether college or central, we all know that we have limited resources
- We must calibrate resources & priorities



NU-RES Hub

The Myths:

Who are we?

What do we do?

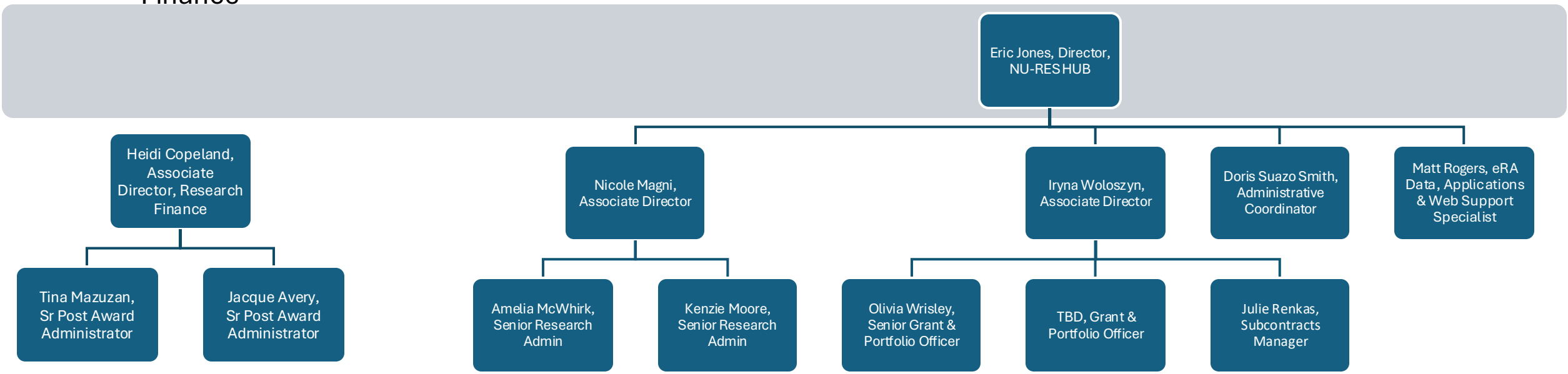
Who do we support?



NU-RES Hub Structure

Research Finance

Research Administration



NU-RES Hub

Who are we?

- A shared administrative and business service unit within Research Enterprise Services (NU-RES), that directly assists client faculty and investigators across the University's global research network with management of their proposals and awards.

What do we do?

• The REGULAR STUFF

- Annotate Funding Opportunity Announcements (FOAs)
- Create Proposal Prep Crosswalks and Checklists
- Coordinate with Subrecipients, if applicable
- Develop Proposal Budgets
- Prepare Proposal Package
- Complete ePAWS records
- Coordinate Institutional Reviews with NU-RES
- Liaise with Funding Agencies, when appropriate
- Request Just-In-Time and Institutional Compliance Review Requests

The "Fun" Stuff

- Strategize with university leadership regarding new institute support
- Host introductory presentations introducing the Hub and other NU research related policies and procedures
- Host regular meetings with client leadership to improve communication, streamline research related business processes, help interpret research-related reports, and address issues quickly.
- Create Hub activity reports for clients
- OUR BEST!!!

NU-RES Hub – Who do we support?

Research intensive units

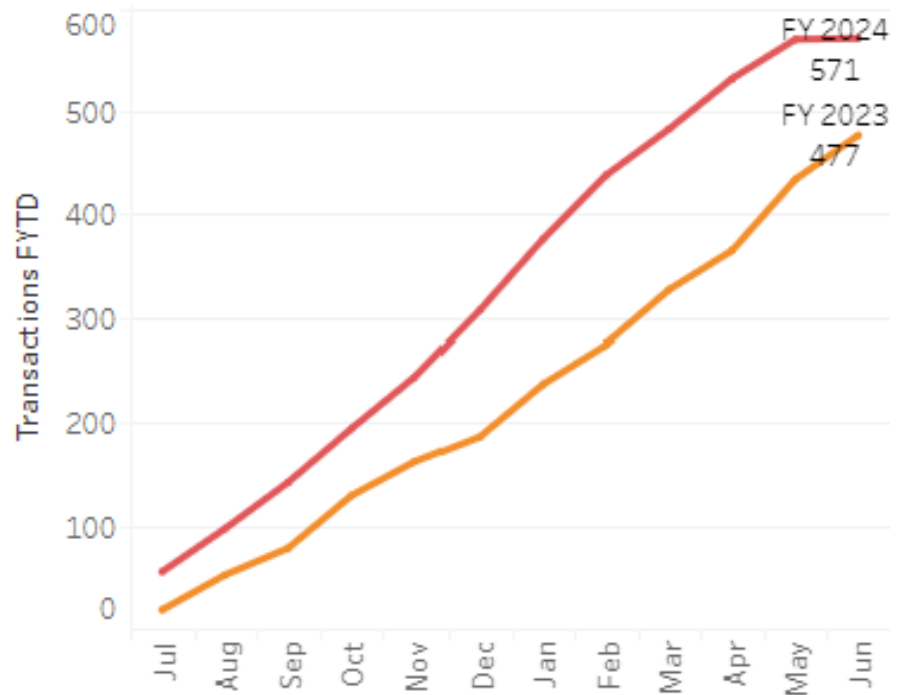
KRI LLC at NU
Institute of Experiential AI
Roux Institute
Mills Institute
Research Economic Development
Global Resilience Institute
Kostas Homeland Security Institute / ICBM
Center for Research Innovation
CPS
School of Law

Emerging research units

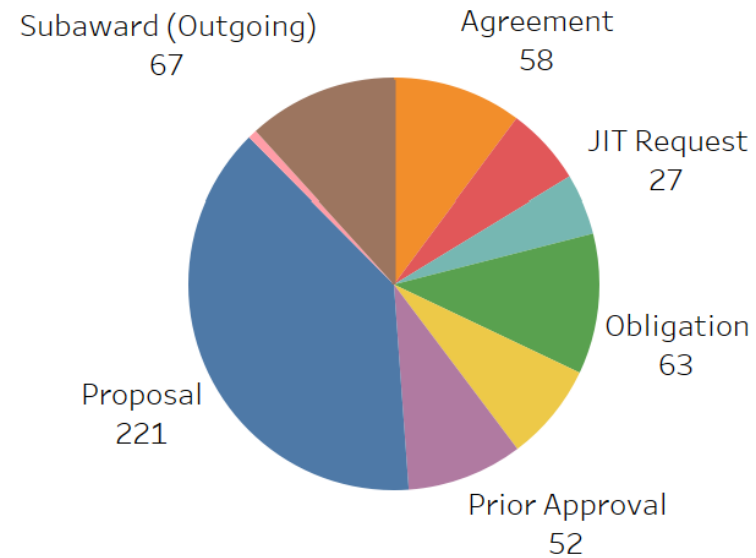
Toronto Regional Campus
Mills College at Northeastern
Office of the Chancellor
D'Amore McKim School of Business
Office of the Provost
Provost Research
Research and Graduate Education
Toronto Regional Campus
Burnes Family Ctr for Social Change and Innovation

Hub Activity

Cumulative Transactions by FY



Completed Transactions by Type



NU-RES Hub – Post Award Support

The Hub Post Award team provides comprehensive post-award research administration services to NU PIs/Units that do not have Research infrastructure to support the complex requirements set forth by federal regulations, funding agency guidelines, award terms and conditions, and University policies.

What we do!

- Provide Monthly Financial Reports
- Provide Project Forecasting
- Provide Project Support
 - Allocation Of Research Effort For Faculty and Staff
 - Transaction Review / Approval
 - Cost Share Tracking
 - Invoice Documentation As Needed
- Transaction Form For Project Changes
 - No Cost Extensions
 - PI Changes
 - Budget Adjustments
 - Scope Changes
- Financial Reconciliation/Reports
- Project Closeout

NU-RES Hub – Post Award Support

How we can help!

- Schedule PI Meetings Quarterly (more often if requested)
 - Go over the budget and spending
 - Identify any changes needed or address any concerns
- Answer Questions On Monthly Financial Reports
- Help Allocate Research Personnel On Awards
- Work With Department(s) To Allocate Operating Expenses
- Assure Compliance Of Costs
- Provide Research Administration Tips Each Month With The Monthly Reports
- Coordinate with other Administrative Offices
- Answer Financial Questions!!!

NU-RES Hub – Post Award Support

Resources!

[Welcome to the NU-RES Hub!](#)

[Resources /Administration Toolbox - Finance At Bottom Of Page](#)

[Financial Monitoring of Sponsored Programs Guidelines](#)

[Allowable Costs: Guidelines](#)

[Financial Review Matrix for Transactions](#)

Contacts: [Jacque Avery \(ja.avery@northeastern.edu\)](mailto:ja.avery@northeastern.edu)

[Tina Mazuzan \(c.Mazuzan@northeastern.edu\)](mailto:c.Mazuzan@northeastern.edu)

HRPP: Department of Human Research



HRPP: Department of Human Research

Protection of the rights and
welfare of participants in
research





Northeastern University
Office of the Provost

GLOBAL CAMPUS EDUCATION AND RESEARCH SAFETY

Marné A. Smith

Associate Vice Provost of Education and Research Safety

Jamie Tessler

Director of Global Safety Program Development and Outreach

global_ers@northeastern.edu

Global Campus ERS Structure

Each Campus has a leader-level Responsible Official, Compliance Lead

Oakland

EHS
Manager

Future:
Specialists

BOSTON

+ Nahant

OARS

11 staffers:
Directors,
Managers,
Specialists

Portland/
Roux

Future:
EHS
Manager

USM: EHS Lead
WEX: EHS Lead
BL: EHS Lead
(faculty volunteers)

Burlington

Lab Safety
Manager

As Needed:
Consultants

San Jose,
Toronto, etc...

TBD

OARS is Local; Global ERS is global

Robin Cyr

VP of Research Admin

Marne Smith

AVP of
Education and Research
Safety

Jamie Tessler

Director, Global ERS
Prog. Devlpmt &
Outreach

Andrea

Voehringer
Director, OARS

OARS :

- supports research safety on the flagship BOSTON campus.
- may provides some short-term technical assistance to other campuses

Global Campus ERS (Education and Research Safety):

- supports ALL other campuses to build their boots-on-the ground research safety programs.
- Research safety is an in-person compliance obligation globally.

Education and Research Safety Regulatory Landscape: It's not just chemicals

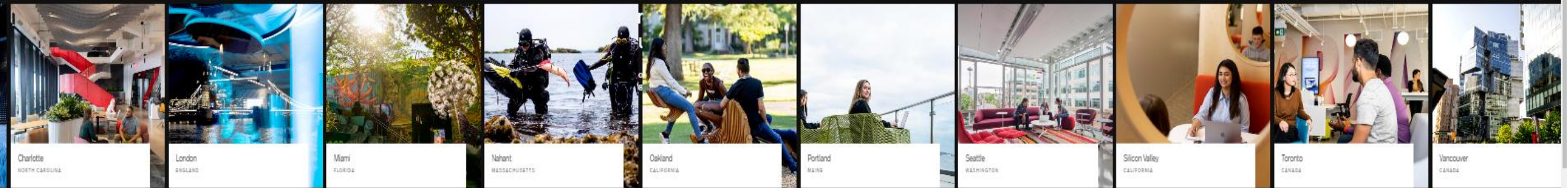
Injury/Illness Response
Fire Extinguisher Training
Indoor Air Quality
Workstation Ergonomics
Evacuation Procedures
Waste Management



Regulatory Standards are Activity Driven.



- Chemical/Gases and Process Safety Compliance
- Radiation Safety and Compliance
- Biological Safety and Compliance
- General Laboratory Operations and Compliance
- Nanomaterials Safety and Compliance
- Art and Media Design Safety and Compliance
- Theater Safety and Compliance
- Food Safety and Compliance
- Clinical Practice Safety and Compliance
- Boating and Diving Safety and Compliance
- Controlled Substance Compliance
- Fire Safety and Fire Code Compliance
- Industrial Hygiene, Exposure Monitoring and Medical Surveillance Compliance
- Hazardous Materials Shipping and Receiving
- Animal Handling Safety
- Emergency Management and Response Planning
- Hazard Communication
- Indoor Air Quality Assessment and Action
- Drone Safety
- Field Research Safety
- Industrial Process Safety
- Machining Safety and Compliance
- Contractor/Construction Safety
- Building Safety and Building Code Compliance
- Ergonomic Assessments and Safety Compliance
- Critical Equipment & Engineering Control Management
- Electrical Safety and Compliance
- Hoists, lifts, Cranes – safety and compliance
- Powered industrial truck safety and compliance
- Public Health and Infectious Disease
- Motor Vehicle – maintenance/operational compliance
- Daycare & Playground EHS compliance
- Environmental Compliance associated with air emissions, water discharges and waste management: SPCC, tanks, asbestos, mold, PCBs



NEW CAMPUS? NEW OBLIGATIONS.

**PLANNING RESEARCH ON A NEW CAMPUS?
YOU WILL NEED A BUDGET.**

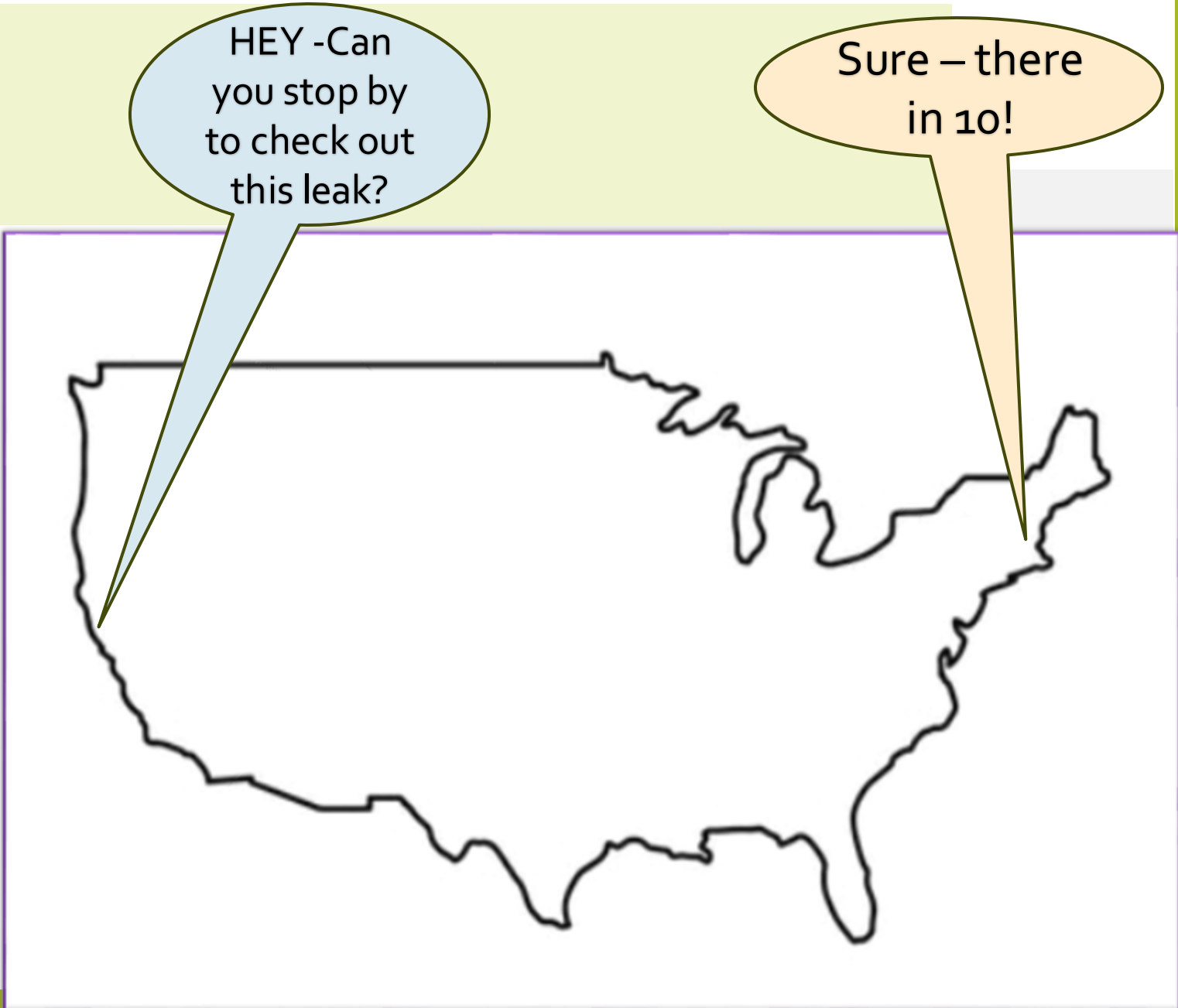
ALL RESEARCH HAS COMPLIANCE OBLIGATIONS.

**COMPLIANCE = BASELINE;
COMPLIANCE DOES NOT GUARANTEE SAFETY.**

MYTH #1

ERS on global campuses can be managed centrally, and remotely.

OARS can do it all!



HEY -Can you stop by to check out this leak?

Sure - there in 10!

MYTH #1

ERS on global campuses can be managed centrally, and remotely.

OARS can do it all!

OARS serves Boston 285+ labs and growing, with a **small** staff.

OARS has a full plate with:

- Compliance obligations
- Special projects/initiatives
- Local regulator activity
- Incidents, urgencies, tech support

RESEARCH SAFETY: Embedded within, boots on the ground!

ERS requirements may vary by municipal, state, federal laws.

MYTH #2

Since my lab requires biosafety 1 (BSL1) containment, no special oversight is needed.

At NU, all biological research requires review and approval.

- IBC structure, by design, must include local input and experts.

MYTH #3

Our campus is using a lab space in a local college.

They will handle all of the safety oversight, training, chemical and bio waste management, right?



MYTH #3

Our campus is using a lab space in a local college.

They will handle all of the safety oversight, training, chemical and bio waste management, right?

- **Lease agreements matter. What are our obligations?**
- **Whose equipment will be used? Ours or theirs?**
 - *Is their equipment inspected, managed?*
- **Training requirements for Fac/Staff/Students in the space? Whose training platform? Access?**
- **Emergency response plans? How will NU folks know what to do?**

MYTH #4

We are redesigning a building to host research labs.

We have a reputable architect.

What could go wrong?



MYTH #4

We are redesigning a building to host research labs.

We have a reputable architect.

What could go wrong?

Not all facilities are created equal. Warehouse ≠ Lab

BSL1 containment ≠ BSL2 readiness

MA architect says "YES"; BFD may say "NO WAY"

MYTH #5

ERS/EHS
staffers are
experts in all
matters of
safety.



MYTH #5

ERS/EHS
staffers are
experts in all
matters of
safety.



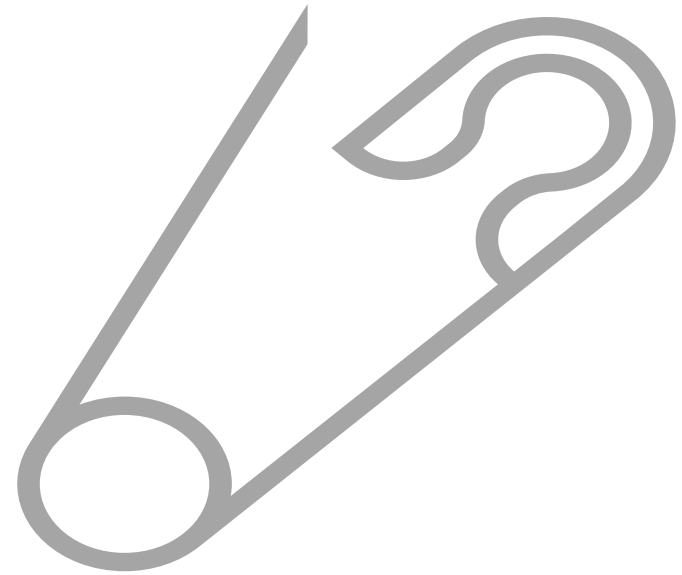
ERS/EHS = vast range of technical expertise required.

Wet Laboratory Safety \neq
Process Safety Engineering.

Experts must be picked based on what they do best.

Myth #6

[Operations person]:
“I did some safety
stuff in my last job.
We’re OK.”



Myth #6

[Operations person]:
“I did some safety
stuff in my last job.
We’re OK.”

- ❑ Safety science is a professional, technical and scientific discipline.
- ❑ Safety science has its own large body of peer-reviewed science, methods, and intervention research.
- ❑ Prior technical, administrative experience, certifications, people skills are required of all effective ERS/EHS professionals.
- ❑ Hire correctly!

Global Campus ERS What we do



- Strategic planning and decision-making
- Develop/build policy and program frameworks for optimal compliance (e.g. Assurance Program)
- Connect campus compliance and ERS/EHS leads to NU-wide lab risk management platforms, systems and support.
- Vetting qualified consultants for your gap analyses
- Support campuses to prepare budgets, ERS/EHS job descriptions, as per their restricted research activity and future plans.
- Support and engage campus ERS/EHS leads to be consistent with the NU brand and research safety expectations.
- Design system-wide safety climate/safety culture initiatives

What we can't do

Finance your on-the-ground campus ERS programs.

Research safety programs and their compliance requirements are a core element of campus operations.



Challenges:

- Timing: When should Global ERS be brought into the conversation?
- Supporting campus leads to budget for ERS.
- Determining local (campus) authority and responsibility for ERS compliance.
- New campus acquisitions w/out mature ERS infrastructure.
- Novel processes that require specialized risk assessments; engineering innovations that exceed available expertise.
- Lab Design: Facility adaptation or renovation for higher-risk activities



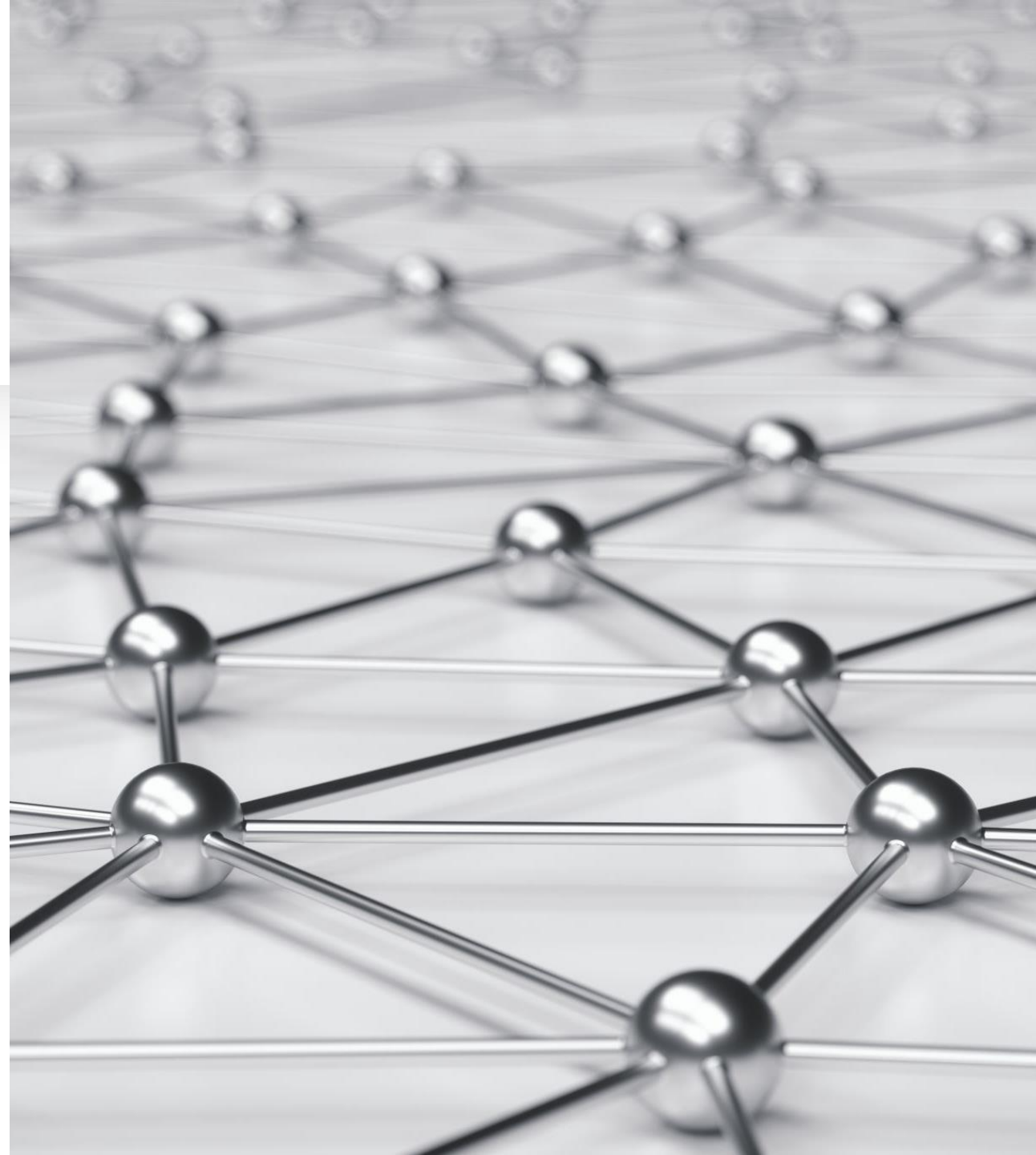
Questions? Start the conversation!
global_ers@northeastern.edu

Marné A. Smith, AVP of Education and
Research Safety

Jamie Tessler, Director of Global Safety
Program Development and Outreach

Research Compliance

- Campus Network Activities:
 - Design tools, guidance, & processes that are transferrable across the network
 - Research location-specific compliance requirements & provide guidance
 - Support campuses with training & outreach while providing autonomy
 - Create policies & procedures that speak to the whole network but are flexible enough for local campuses





Research Compliance: Case Study

Export Controls: very country-specific requirements that involve both the physical destination, as well as the type of technology and the end user

- Mills Art Museum
- NU London
- Canadian campuses (Toronto & Vancouver)

Key Takeaways:

- Please do not assume we know about a new activity or capability (or even campus)
- Even if a new capability is not directly intended for research: understand there may still be implications for research personnel
 - Example: safety regulations governing research & academic labs are not that different
- Standards are location AND activity-driven
- Each campus will be different
- Contact us early and often!

